



Crown Resorts Limited Risk Management Strategy

Crown Resorts Limited ACN 125 709 953
A public company limited by shares

Commercial in Confidence

Commercial In Confidence

Table of contents page

1.	Executive Summary.....	2
2.	Background	3
2.1.	Document Owner	3
2.2.	Confidentiality	3
2.3.	Definitions	3
3.	Risk Management Principles.....	4
4.	Risk Management Framework.....	5
5.	Risk Governance Framework.....	5
5.1.	The role of the Board.....	6
5.2.	The role of the Risk Management Committee.....	7
5.3.	The consolidation of entities within Crown.....	8
5.4.	The first line of defence.....	8
5.5.	The second line of defence.....	10
5.6.	The third line of defence	11
6.	Risk Appetite.....	11
6.1.	Risk Categories	12
6.2.	Risk Appetite Statement and Reporting Tolerances.....	12
6.3.	Reporting Triggers – Board Reporting Mechanisms	14
6.4.	When a risk materialises: issues management.....	14
6.5.	Operationalisation of the Risk Appetite	14
7.	Risk Management Process and Methodology	16
7.1.	Risk Methodology.....	16
7.2.	Risk Identification	18
7.3.	Monitoring and Reporting	19
8.	Review.....	19

Document History:

Document Changes	Author(s)	Date	Approval Authority
Document created	Anne Siegers - GGM –R&A Joshua Preston - CLO	Xx May 2019	Crown Resorts Board

1. Executive Summary

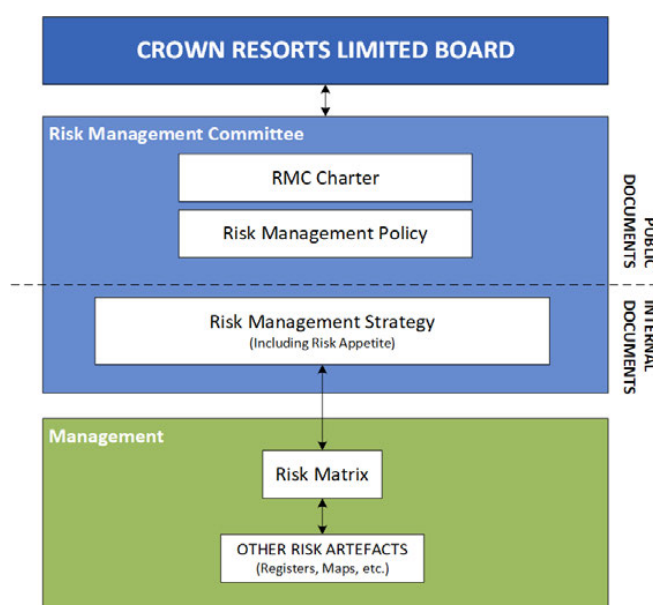
As an ASX listed company, Crown must consider the ASX Corporate Governance Principles. Principle 7 relates to how an organisation must recognise and manage risk: 'A listed entity should establish a sound risk management framework and periodically review the effectiveness of that framework'. Fundamentally, that principle articulates the following concepts:

- The Board of a listed entity is ultimately responsible for deciding the nature and extent of the risks it is prepared to take to meet its objectives.
- It is the role of the Board to set the risk appetite for the entity, to oversee its risk management framework, at least annually, and to satisfy itself the framework is sound.
- Ultimate responsibility for a listed entity's risk management framework rests with the full Board, although it can have in place a committee to oversee risk.
- The organisation should have an independent internal audit function and articulate its structure and role.

The Crown Resorts Limited (**Crown**) Risk Management Strategy (**RMS**) is an internal document, which sets out the fundamentals of what the Crown Resorts Limited Board (**Board**) expects from its risk management framework across all entities of the group. The RMS articulates the following:

- the risk management principles that underline Crown's management of risk;
- roles and responsibilities around risk across the organisation, starting with the Board;
- the risk management framework;
- the risk appetite of the Board; and
- the basic principles, aligning to *ISO31000:2018 Risk Management*, that support the identification and management of risk at Crown.

It aligns with other corporate risk documents as follows:



2. Background

The Board, being ultimately responsible for the effective management of risk at Crown, has established and approved this RMS.

Risk is inherent in all Crown's products, activities, processes and systems used in day-to-day operations. The Board also acknowledges that in order to operate and fulfil its objectives, Crown needs to take risks.

The purpose of this RMS is to describe Crown's approach to ensuring that it maintains a risk management framework that supports the effective management of its material risks in a manner consistent with its risk appetite and strategic objectives.

2.1. Document Owner

The Board owns and approves this document.

2.2. Confidentiality

This document is intended for internal use only and should not be distributed outside Crown without the express permission of the General Counsel.

2.3. Definitions

The following key definitions apply to the RMS:

- 'Australian Resorts' means Crown Melbourne, Crown Perth and Crown Sydney.
- 'Board' means Crown Resorts Limited Board.
- 'BOT' refers to the Business Operations Teams for Crown Perth and Crown Melbourne.
- 'CEO' refers to the Executive Chairman of Crown Resorts and/or the Chief Executive Officer of Australian Resorts or equivalent of any relevant wholly-owned subsidiary. .
- 'Crown' means Crown Resorts Limited and its material wholly owned subsidiaries. This includes Crown Melbourne, Crown Perth, Crown Sydney, Crown Aspinalls and Betfair.
- 'Executives' refers to the Crown Resorts' Executive team as well as the Australian Resorts' Executive team and any other senior executives of the wholly owned subsidiaries.
- 'Inherent risk' means the risk assessment prior to consideration of mitigating factors.
- 'Key management personnel' means Executives and General Managers for critical business functions.
- 'Residual risk' means the risk assessment after consideration of existing mitigating factors and/or controls.
- 'Risk' is defined as the effect of uncertainty on an objective. It is an event or possible deviation from plan, characterised by reference to the likelihood of the potential event and the impact of that event occurring.

Commercial In Confidence

- ‘Risk appetite’ is the amount of risk that the organisation is willing to accept in pursuit of its strategic objectives and in the interest of protecting its stakeholders.
- ‘Risk culture’ means the system of values and behaviour that shapes the decisions and actions of staff in relation to risk taking.
- ‘Risk governance framework’ refers to the formal structure that supports risk-based decision-making and oversight across all operations of Crown and to support the Board’s desired risk culture.
- ‘Risk tolerance’ is the quantitative application of risk appetite, and represents the operational boundary for the relevant risk exposure.
- ‘Risk management framework’ is the totality of systems, structures, policies, processes and people that Crown uses to identify, measure, monitor, report and control all internal and external sources of material risk.
- ‘Senior Management’ refers to all members of the Business Operations Team (for Crown Melbourne and Crown Perth) and other key management personnel of Crown Resorts and the wholly owned subsidiaries.

3. Risk Management Principles

Crown’s culture, and more specifically its risk culture, is built around a number of core pillars, including its service standards philosophy, integrity and compliance focus, and safety of staff and patrons. These elements underpin all other elements of the risk framework and are fundamentally embedded across the organisation.

Crown’s strategy for managing risk is based on the following fundamental principles:

- the fundamental purpose of risk management is to provide a framework within which Crown and its employees can take well informed risks that support its strategic objectives and add value to the organisation;
- effective risk management requires a robust and effective risk governance framework that includes clearly defined risk management responsibilities, accountabilities and mechanisms for independent oversight, review, challenge and assurance;
- effective risk management requires a strong, robust and pervasive risk culture that is consistent with Crown’s values and risk appetite; and recognises that risk management is the responsibility of all staff;
- effective risk management requires clear articulation and documentation of risk appetite by the Board and effective communication of that appetite to all relevant levels of the organisation; and
- effective risk management requires consistent risk identification, assessment, measurement, management, monitoring and reporting processes that are integrated into and support strategic and business processes.

To give effect to these fundamental principles, Crown has developed a comprehensive risk management framework.

4. Risk Management Framework

The risk management framework is the totality of systems, structures, policies, processes and people that Crown uses to identify, measure, monitor, report and control all internal and external sources of material risk.

The purpose of the risk management framework is to provide a structure for identifying and managing each material risk in a manner consistent with Crown's strategic objectives and risk appetite.

The key elements of the Risk Management Framework that give effect to the RMS include:

- the Crown Risk Governance Framework (Section 5);
- the Risk Appetite (Section 6);
- How the risk appetite is operationalised (Section 7); and
- Crown's risk management processes and methodology (Section 8).

The Risk Management Framework is an overarching framework that sets the basic principles within which other, more specific risk management policies and procedures are developed, and which other corporate frameworks follows. Some of these other frameworks include:

- Compliance
- Responsible Service of Gaming (RSG)
- IT Change Management
- Work Health and Safety
- AML/CTF
- Procurement
- Security and Surveillance

5. Risk Governance Framework

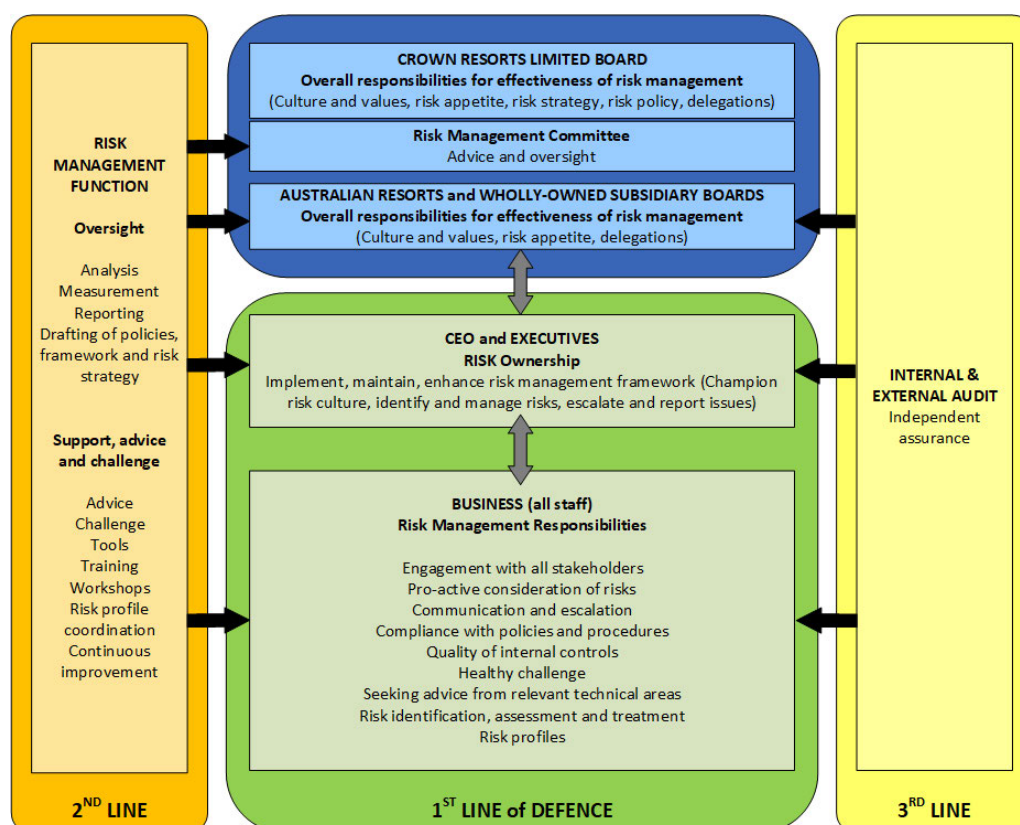
The Risk Governance Framework refers to the formal structure to support risk-based decision-making and oversight across all operations of Crown and to support the Board's desired risk culture.

An effective Risk Governance Framework requires:

- risk ownership and risk management accountability to be clearly defined and assigned to those responsible to support the consideration of risk in all decision making. This supports the integration of risk identification and assessment into organisational decision making processes;
- independent oversight, challenge, reporting and monitoring of the risk culture, risk profile, risk management framework and material business decisions that have the potential to impact the organisations risk profile; and
- independent assurance regarding the appropriateness, effectiveness and adequacy of, and compliance with, the risk management framework.

For this reason, the Board has endorsed a "three lines of defence" risk governance model. An overview of Crown's Risk Governance Framework is illustrated below:

Commercial In Confidence



The following sections outline the roles and responsibilities of each of the key components of the Risk Governance Framework illustrated above.

5.1. The role of the Board

The Board is ultimately responsible for the establishment and implementation of a risk management framework that enables Crown to appropriately develop and implement strategies, policies, procedures and controls to identify and manage its material risk exposures.

To fulfil its obligations, the Board:

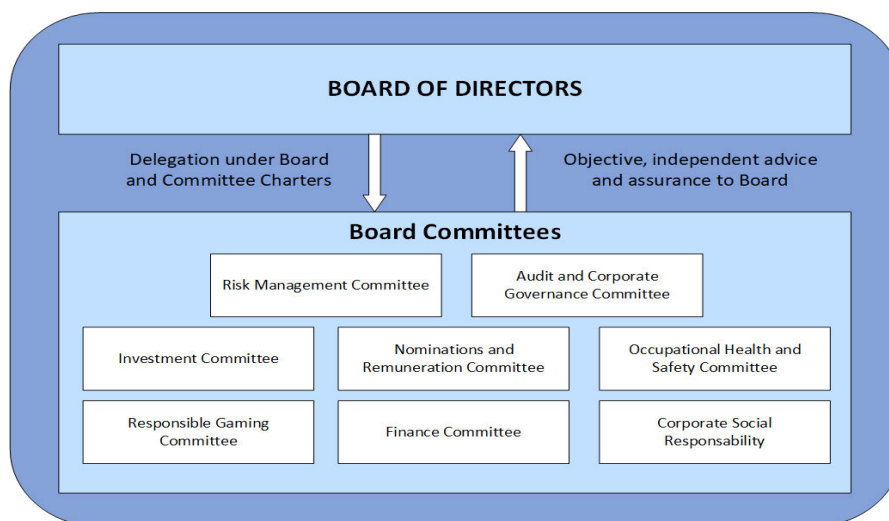
- clearly defines Crown's risk appetite;
- establishes and approves this RMS to clearly articulate Crown's risk culture and strategy for managing risk;
- ensures that senior management monitors, reports and manages all material risks consistent with the strategic objectives and risk appetite approved by the Board;
- ensures that Crown maintains an independent Risk Management and Internal Audit Function across its operational entities that have the appropriate reporting lines, resourcing, authority and access to the Board and organisation to fulfil their responsibilities outlined in Section 5.4 and 5.5 below;
- recognises uncertainties, limitations and assumptions attached to the measurement of material risk; and
- ensures that the Risk Management Framework is reviewed at least annually and approves any material changes to the RMS and the appetite.

Commercial In Confidence

The Board has established a number of Board Committees having regard to the risk profile of Crown, the complexity of Crown's business operations as well as the experience and expertise of the directors.

While some duties of directors may be delegated to Board Committees, as appropriate, the Board retains ultimate responsibility for ensuring that those duties are performed.

The following diagram illustrates the Board sub-committees in place at Crown Resorts:



Each of these Board Committees forms part of, and plays an integral role in, the governance framework and supporting the Board to fulfil its responsibilities in respect of the Risk Management Framework. The primary Committee responsible for assisting the Board in overseeing the Risk Management Framework is the Risk Management Committee (**RMC**). Section 5.2 outlines the responsibilities and role of the RMC and its interaction with the Board.

5.2. The role of the Risk Management Committee

The RMC has been delegated responsibility for overseeing Crown's Risk Management Framework and assists the Board by providing objective oversight of the implementation and operation of Crown's Risk Management Framework.

The Chair of the RMC provides a report to the Board following each RMC meeting to ensure adequate communication between the Committee and the Board.

The role of the RMC is articulated in the RMC Charter. In particular, the RMC's responsibilities include:

- overseeing and advising the Board on Crown's overall risk appetite, risk culture and Risk Management Strategy;
- establishing a view of Crown's current and future risk position relative to its Risk Appetite;
- overseeing the establishment, review, ratification and implementation of a Risk Management Framework that identifies and addresses the material risks faced by the organisation and is consistent with the strategic objectives and the RMS;

Commercial In Confidence

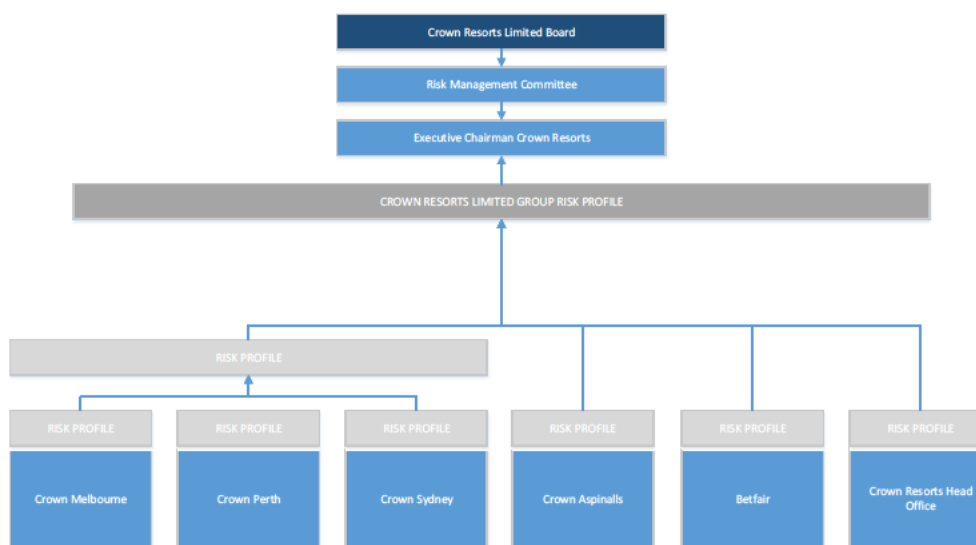
- overseeing the development of risk management policies, systems and processes to facilitate a consistent approach to the identification, assessment and management of risks;
- constructively challenging senior management's proposals and decisions on all aspects of risk management; and
- reviewing regular reports on Crown's risk profile and the adequacy and effectiveness of the Risk Management Framework and internal control systems.

5.3. The consolidation of entities within Crown

The Crown organisation is comprised of a number of wholly owned subsidiaries.

To ensure visibility and transparency across the organisation, the following steps are in place:

- each material entity is responsible for updating its own corporate risk profile, reflecting the material risks of its business, and operating in line with this RMS;
- On at least an annual basis, those profiles are analysed by the risk department as a key input into the annual update of the consolidated Crown Resorts risk profile, which is presented to the RMC.
- Consolidation of risk profiles will take place against the following path:



5.4. The first line of defence

Central to Crown's Risk Management Framework is the concept that risk is best understood, identified, assessed, managed and integrated into decision making processes by assigning risk ownership and risk management responsibility to those responsible for making material business decisions. This supports the integration of risk identification and assessment into organisational decision-making processes.

The Board has delegated, subject to Board oversight and within the confines of the strategic objectives and this RMS, to the Executive Chairman the responsibility of management oversight of risk for Crown Resorts and its wholly owned subsidiaries. The Executive Chairman in turn has delegated to the CEOs or equivalent of each wholly owned subsidiary the day-to-day management of the Risk Framework for each respective business.

Commercial In Confidence

The CEOs, under authorised delegation from the Board and Executive Chairman, have sub-delegated business management responsibilities to Executives, Senior Management and to specific management committees.

The CEOs, Executives and Senior Management form the first line defence and assume ownership of, and accountability for the management of, the material risks faced and effective implementation of the Risk Management Framework.

All other Crown staff support the implementation of the Risk Management Framework under direction and delegation from the CEOs, Executives and Senior Management.

(a) CEOs, Executives and Senior Management responsibilities

CEO, Executives and Senior Management assume ownership of the material risks faced by the organisation and are charged with the responsibility for the implementation of the Risk Management Framework. Specifically, this includes:

- establishing, maintaining and championing an effective risk culture throughout the organisation;
- ensuring that policies, processes, systems and internal controls are developed to effectively identify, assess, manage and monitor the risks faced by the organisation in a manner consistent with the Risk Management Framework;
- ensuring that these policies, processes, systems and internal controls are integrated into, and support, business decision making processes and the ongoing maintenance and enhancement of the risk management framework;
- managing Crown's risk profile within the Board's risk appetite and tolerances defined in the RMS;
- ensuring that appropriate reporting and monitoring processes are developed and implemented to escalate relevant information to CEO, Executives, Senior Management, the Risk Management Function and, if necessary, the Board; and
- developing and implementing timely remediation strategies to address material risk exposures that are outside of the Board's Risk Appetite.

(b) All other Crown staff

Although the CEOs, Executives and Senior Management are assigned risk ownership, all staff play an integral role in the effective implementation of the Risk Management Framework and in the management of risk. All Crown's staff are responsible for:

- performing their role in a manner consistent with the expected organisational culture and Code of Conduct;
- implementing and complying with all Crown's policies, processes, systems and internal controls that have been developed to effectively identify, assess, manage and monitor the risks faced by the organisation; and
- managing, and being accountable for risks particular to their area of responsibility as delegated by the CEO, Executives and Senior Management.

Commercial In Confidence

5.5. The second line of defence

Crown maintains an independent Risk Management Function that is responsible for assisting the Board, RMC, CEOs, Executives and Senior Management to develop and maintain the Risk Management Framework.

The Group General Manager – Risk and Audit (**GGM – R&A**) is designated as being the person responsible for the risk management function for Crown. To ensure that the risk management function has the appropriate authority and operational independence to perform its role and responsibilities, the GGM – R&A and Risk Management Function:

- reports directly to the CEO and the Chief Legal Officer (**CLO**) for Australian Resorts, is a member of BOT, and provides functional support to Crown wholly-owned subsidiaries as required and appropriate. This ensures that the GGM – R&A has appropriate authority and opportunity to challenge activities and decisions that may materially affect the risk profile of Crown;
- is an invited participant of the RMC meetings. This ensures that the GGM – R&A and Risk Management Function has regular and unfettered access to the RMC; and
- has no operational business reporting line or revenue generating responsibilities (1st line).

The responsibilities of the Risk Management Function and GGM – R&A include:

- assisting the Board, RMC, CEOs, Executives and Senior Management to develop and maintain a risk management framework that adequately addresses the material risks faced by Crown;
- providing independent and objective guidance, challenge and advice to the RMC and Board in respect of the development and regular review of the risk management framework including the Board approved risk appetite and RMS;
- developing risk management policies, systems and processes that facilitate a consistent approach to the identification, assessment and management of material risks across the organisation and that build risk management capabilities;
- providing independent and objective challenge to the CEOs, Executives and Senior Management's implementation of the risk management framework and to the effectiveness of risk management practices;
- participating in, and providing effective challenge to, decision making processes that could materially affect the risk profile of the organisation;
- oversight of the processes and methodologies used to identify, measure, monitor and report material risks;
- encouraging subject matter experts within, or external to, the business to be engaged when necessary;
- providing independent, objective and timely reporting of Crown's risk profile relative to the Board's Risk Appetite and escalation to the RMC, Board, CEO, Executives and/or Senior Management of actual or potentially material risk matters;
- effectively supporting the communication of the Risk Management Framework, Risk Appetite, Risk Management Strategy and Board's desired risk culture throughout the organisation;

Commercial In Confidence

- providing guidance, advice and training to the relevant staff on risk related matters and the application of the Risk Management Framework.

The second line of defence also includes Compliance, AML/CTF and Legal functions which, together, assist in the management of each Crown entity's compliance, regulatory and legal risks.

5.6. The third line of defence

To provide independent assurance to the Board in respect of the Risk Management Framework, Crown has established an independent Internal Audit function for its operational entities.

To ensure the independence of the Internal Audit function from the first line of defence the person designated as being responsible for the Internal Audit function (the GGM – R&A) has:

- a direct reporting line to the CEO – Australian Resorts;
- a functional reporting line to the RMC;
- an operational reporting line to the CLO – Australian Resorts, who in turn has a direct reporting line to the CEO - Australian Resorts and the Boards of each Australian resorts entity; and
- no operational business reporting line or revenue generating responsibilities (1st line).

In respect of the Risk Management Framework, the third line is responsible for:

- developing an Internal Audit Plan that provides assurance over the material operational risks of the organisation and is appropriate to test the effectiveness of the policies, controls and procedures implemented to manage those risks as documented in the Corporate Risk Profile; and
- at least every three years, facilitating an independent review of the appropriateness, effectiveness and adequacy of the Risk Management Framework.

6. Risk Appetite

Fundamental to the implementation of an effective Risk Management Framework is the articulation, by the Board, of its Risk Appetite. This process allows the Board to communicate to management its expectation with regards to the degree of losses that it is willing to absorb in the pursuit of its strategy.

The appetite definitions guide management risk taking activities and communicates the Board's expectations of risk culture by establishing:

- a high level statement of the Board's risk philosophy and the expected risk culture and behaviours of the organisation;
- qualitative statements and quantitative metrics triggering RMC reporting for each material risk category; and
- the requirements for the monitoring and reporting of Crown's risk profile relative to quantitative parameters (risk tolerances) against these risk categories.

Commercial In Confidence

6.1. Risk Categories

In structuring its Risk Appetite, Crown has considered the range of consequences that any event could trigger, and it has organised its Risk Appetite against these seven (7) impact categories, which are:

- Financial
- Brand / Reputation
- Regulatory / legal
- People
- Customers / Patrons
- Infrastructure
- Strategy /Business Sustainability

6.2. Risk Appetite Statements and Reporting Tolerances

The following qualitative statements and quantitative metrics define the Board's appetite and its tolerance for individual risk events. Quantitative metrics trigger reporting requirements to the RMC. The trigger can be either a single event or a series of events cumulating to the below thresholds.

Category	Qualitative Statement	Quantitative Metrics – RMC Reporting Triggers	
Financial	Protect and deliver shareholder value	Outside normal trading EBITDA losses (per event)/ and or adverse to the current (normalised) forecast	>\$10M
		Large capital, equity or treasury transaction	>\$10M
Brand / Reputation	Maintain shareholder confidence	Internal event creating a sustained share price loss	>5%
	Retain public confidence in the Crown brand	Sustained negative national or international media coverage	Any event
Regulatory/ legal	Maintain systematic compliance with regulatory, legal, statutory and contractual obligations	Significant breaches that may have a financial or reputational impact	Any event
		Material legal action or class action	Any event
	Build and maintain professional and collaborative relationship with regulators and relevant government bodies	Significant breach or event that has the potential to damage the relationship	Any event
	Deliver gaming and alcohol services responsibly	Material RSG issues including adverse media	Any event
		Integrity of liquor licences	Any loss of licence and/ or points

Commercial In Confidence

Category	Qualitative Statement	Quantitative Metrics – RMC Reporting Triggers	
People	Maintain a safe and healthy workplace	Significant notifiable incidents under the Workplace Health and Safety Act	Any event
	Maintain corporate culture and performance	Sustained staff turnover and/or unplanned absences above average	>5% point increase
		Loss or potential loss of key management personnel	Any event
	Maintain healthy engagement with Unions	Imminent industrial action	Any event
Customers/ Patrons	Ensure our services are available to our target customers	Negative event affecting segment of patrons (ex VIP, F&B, Hotel)	Over 20% or 20,000 patrons of segment type, or \$100M in revenue
Infrastructure	Maintain appropriate security and surveillance across the properties	Security incident that threatens people or property	Any event
	Maintain high levels of critical IT Infrastructure availability and reliability	Loss of core IT infrastructure or multiple key systems	>24 hrs
	Protect information	External or internal security breaches resulting in unauthorised access to, or loss of, customer, employee and company data likely to result in serious harm	Any event
	Maintain high quality physical infrastructure to deliver our world class services	Loss of critical physical infrastructure	>24 hrs
	Maintain strong Business Continuity and Disaster Recovery capabilities and facilities	Unplanned loss of gaming floor in one property	>10% for up to 24 hrs
		Unplanned loss of non-gaming front of house facilities in one property	> 1 hotel or 50% F&B for over 24hrs
Strategy / Business Sustainability	Maintain 24/7 operations	Critical event requiring mobilisation of resources and CMT/EMT activation	Any event
	Ensure strategic projects are delivered to provide medium	Key strategic project delayed by 12 months or more	Any event

Commercial In Confidence

Category	Qualitative Statement	Quantitative Metrics – RMC Reporting Triggers	
	to long term business sustainability and competitiveness		
	Make strategic investment and divestment decision that enhance business value and sustainability	Change in ownership share of related or third party entity	Any event

6.3. Reporting Triggers – Board Reporting Mechanisms

At each meeting of the RMC, a report against this risk appetite table will be prepared by the GGM – R&A. It will highlight events against reporting triggers by exception.

In most circumstances, reporting trigger events at the regular RMC meeting will be sufficient, but at times, special meetings of the RMC or other Board forums may be required based on the magnitude of the event, as well as the requirement for a timely Board decision.

The requirement for a special meeting will be decided on a case-by-case basis by consultation between the CEO, CLO, General Counsel and the GGM – R&A, as well as any relevant key management personnel.

6.4. When a risk materialises: issues management

Risks identified in the risk profile are future focused, but a risk that is rated possible, for example, still means that it is expected to occur every 2 to 5 years. Therefore, on a regular basis, risks that are rated within the appetite of the Board will materialise and the impact will be incurred by Crown.

When one of them materialises, two key actions will take place:

1. the risk rating will be reviewed to ensure that it is still relevant and as accurate as possible, taking into account the recent materialisation of the risk and the potential change in risk context. In that review, consideration of the effectiveness of the relevant control framework will also take place; and
2. the specific event will be managed and operational procedures will be applied within the appetite of the Board: if the consequences are within the thresholds described in section 6.2, management will handle the event; otherwise, the RMC/Board will have oversight of the resolution.

6.5. Operationalisation of the Risk Appetite

Risk Appetite is a high-level and qualitative concept, and needs to be translated into quantifiable and measurable thresholds to allow the business to operate within that articulated level of risk. It also needs to be relevant and understandable for day-to-day activities across the whole organisation.

This translation is facilitated through the **Risk Matrix** which defines likelihood and impact thresholds. The combination of a likelihood rating with a consequence rating provides a risk rating. This rating can be either inherent or residual.

Commercial In Confidence

The Risk Matrix is the cornerstone of the risk identification and assessment processes detailed in Section 7 of this document and supports a consistent understanding of operational risk appetite, assessment and management across the business.

The Risk Matrix is updated by the Risk Management Function and is approved by the Executive Chairman for Crown Resorts and the CEOs or equivalent for the wholly owned subsidiaries.

The residual risk ratings guide the delegated responsibilities for the management and acceptance of risk within the boundaries of the delegations schedules.

They are expressed on the Risk Map by colour, which represent escalation levels as follows:

LIKELIHOOD	Almost certain					
	Likely					
	Possible					
	Unlikely					
	Rare					
		Insignificant	Minor	Moderate	Major	Severe
IMPACT						

Legend:

	Critical risk – <i>Oversight by the RMC/Board</i>
	High risk – <i>Managed by CEO and relevant EGMs</i>
	Moderate risk – <i>Managed by BOT members</i>
	Low risk – <i>Managed as part of BAU</i>

Oversight by the RMC and/or Board means that:

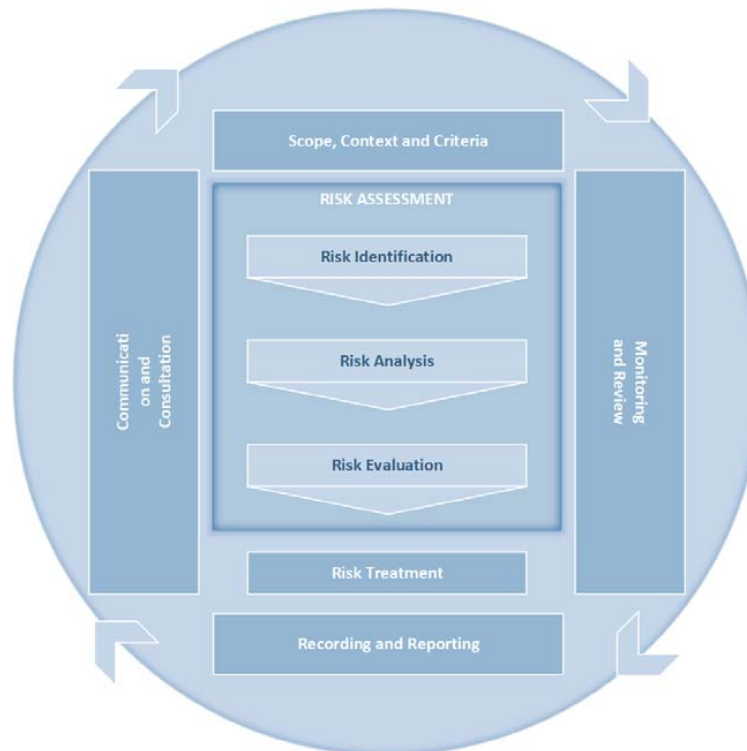
- the risk or issue is presented to the RMC and/or Board,
- remediation actions (including acceptance of the risk) are discussed and
- approval is obtained where required.

Commercial In Confidence

7. Risk Management Process and Methodology

7.1. Risk Methodology

The risk management process is a systematic, recorded and regularly reviewed process. Crown follows the key principles and guidelines of *AS/NZS ISO 31000:2018 Risk Management – Principle and Guidelines* in identifying, assessing, evaluating, controlling and monitoring risk. This process is illustrated in the diagram below:



Source: AS/NZS ISO 31000:2018

These steps are the basis for any risk management activity at Crown and are outlined below.

(a) Scope, Context and Criteria

By establishing the context, the organisation articulates its objectives, defines the external and internal parameters to be taken into account when managing risk, and sets the scope and risk criteria for the remaining process.

(b) Risk Identification

This step includes identifying sources of risk, areas of impacts, events (including changes in circumstances), causes and potential consequences. The aim of this step is to generate a comprehensive list of risks based on those events that might create, enhance, prevent, degrade, accelerate or delay the achievement of objectives.

(c) Risk Analysis

Risk analysis involves developing an understanding of the risk. Risk analysis provides an input into risk evaluation and to decisions on whether risks need to be treated, and on the most appropriate risk treatment strategies and methods. Risk analysis involves consideration of the causes and sources of risk, their positive and negative consequences, and the likelihood that

Commercial In Confidence

those consequences can occur. Factors that affect consequences and likelihood are identified. Existing controls and their effectiveness and efficiency are also taken into account.

(d) Risk Evaluation

The purpose of risk evaluation is to assist in making decisions, based on the outcomes of risk analysis, about which risks need treatment and the priority for treatment implementation.

It involves comparing the level of risk found during the analysis process with risk criteria established when the context was considered. Based on this comparison, the need and prioritisation for treatment can be considered.

(e) Risk Treatment

Risk treatment involves selecting one or more options for modifying risks, and implementing those options. Risk treatment options are not necessarily mutually exclusive or appropriate in all circumstances. The main treatment options are:

- Accept: deciding that the risk is acceptable in its current state of likelihood and impact.
- Avoid: deciding the risk is unacceptable for Crown and the actions or circumstances giving rise to the risk should be ceased.
- Monitor: the level of residual risk is currently appropriate, but monitoring is required to ensure the context or control effectiveness does not change.
- Optimise: taking actions to increase the likelihood and/or the consequence of an opportunity or improve the efficiency of the control framework in place for the risk.
- Reduce: taking action by changing the control environment to reduce the likelihood and/or the consequence of the risk materialising.
- Transfer: This involves transfer of risk at a cost to a third party. For Crown, this transfer occurs primarily through insurance policies.

(f) Communication and Consultation

Communication and consultation with external and internal stakeholders takes place during all stages of the risk management process. Effective external and internal communication and consultation ensures that those accountable for implementing the risk management process and stakeholders understand the basis on which decisions are made, and the reasons why particular actions are required.

(g) Monitoring and Review

Crown's monitoring and review processes are carried out for the purposes of:

- informing Crown's understanding of its operational risk profile relative to the Board's Risk Appetite;
- ensuring that appropriate controls are established, effective and are efficient in both design and operation;
- monitoring the progress in implementing risk treatment or remediation plans;
- detecting changes in the external and internal context, including changes to risk criteria and the risk itself which can require revision of risk treatments and priorities; and

Commercial In Confidence

- identifying emerging risks.

(h) Recording and reporting

This part of the process is about ensuring that both the risk management process as well as the outcomes are documented and reported to the right levels of the organisation that will ensure risk-based decisions are made in line with appetite.

7.2. Risk Identification

Crown's strategy for identifying, analysing and evaluating its risks consists of two key processes, which include:

- a "top-down" risk assessment process that is embedded into the ongoing engagement process with the Board.

This process focuses on risks arising from the strategic objectives and the environmental uncertainties arising from the context of the organisation (i.e. economic and operating environment); and.

- a "bottom-up" risk assessment process that originates at each business unit and is aggregated up into Executive and finally a Corporate Risk Profile.

The bottom-up approach focuses on the short term strategic and operational risks of Crown. These risks are identified via an annual risk profiling mechanism that requires each business unit to review and update its risk profile.

The outcomes of the top-down and bottom-up processes are analysed and reconciled by the Risk Management Function to ensure alignment, identify gaps and seek appropriate management action to rectify any identified gaps.

Together, these processes serve to identify the material risks of the organisation and inform the CEO, Executives and the Board's view of the aggregated risk profile of Crown. They also assist to ensure that appropriate management strategies are implemented to manage that risk profile within risk appetite and inform the ongoing review and enhancement of the risk management framework.

The Risk Management Function is responsible for co-ordinating and facilitating the completion of these processes, preparing the aggregated Corporate Risk Profile and reporting the outcomes to the RMC.

Formal reviews are facilitated on an annual basis by the Risk Management Function. Each Executive is required to review and approve their business unit and aggregated Executive level risk profiles. The aggregated Corporate Risk Profile is reviewed and approved by the CEO and reported to the RMC at least annually.

These risk profiles form the basis for the development of the Internal Audit Plan. This ensures that the assurance processes in place through the third line of defence are aligned to the material risks of the organisation and assess the effectiveness of the internal control environment established to manage each risk.

Material findings from audit reviews are reviewed by the Risk Management Function to re-evaluate risk ratings and processes for each risk. This process assists in the ongoing review and enhancement of the Risk Management Framework.

Commercial In Confidence

7.3. Monitoring and Reporting

The Risk Management Function is primarily responsible for monitoring compliance with the Board's articulated Risk Appetites and risk tolerances and escalating material risk issues to the Board.

The reporting and monitoring processes of the Risk Management Function do not negate the responsibility of the CEOs, Executives and Senior Management to monitor and report risk matters in a manner consistent with Board expectations. The Executives and Senior Management are responsible for reporting to the Risk Management Function and CEO material actual or potential risk matters in an open, transparent and honest manner.

The monitoring of risks against the Board's defined risk tolerances is performed by the Risk Management Function on an ongoing basis and is reported to the RMC at each meeting. In addition, the Risk Management Function will monitor key performance and risk indicators that provide insight into the different risk categories, and inform risk-taking activities for management.

8. Review

The RMS will be reviewed annually by the GGM – R&A and any changes proposed will be recommended to the RMC for consideration and the Board for approval.

In addition to the internal review process, Crown will ensure that its RMS and Risk Management Framework is subject, at least every three years, to an external review. The results of these reviews will be reported to the RMC.

Crown Resorts Limited
June 2019